

FOR LEASE

27 MAIDEN LN
SAN FRANCISCO, CA

UNION SQUARE OFFICE SUITES AVAILABLE

AVAILABLE SPACES

Suite	Floor	RSF	Rent
203	2nd	±1,168	\$24.00
625	6th	±802	\$35.00
650	6th	±4,658	\$29.00

→ VIRTUAL TOURS

→ VIEW WEBSITE

Call for Pricing

SCOTT VIX

415.309.4015 | scott.vix@kidder.com

LIC N° 01407761

JIM WALKER

415.229.8910 | jim.walker@kidder.com

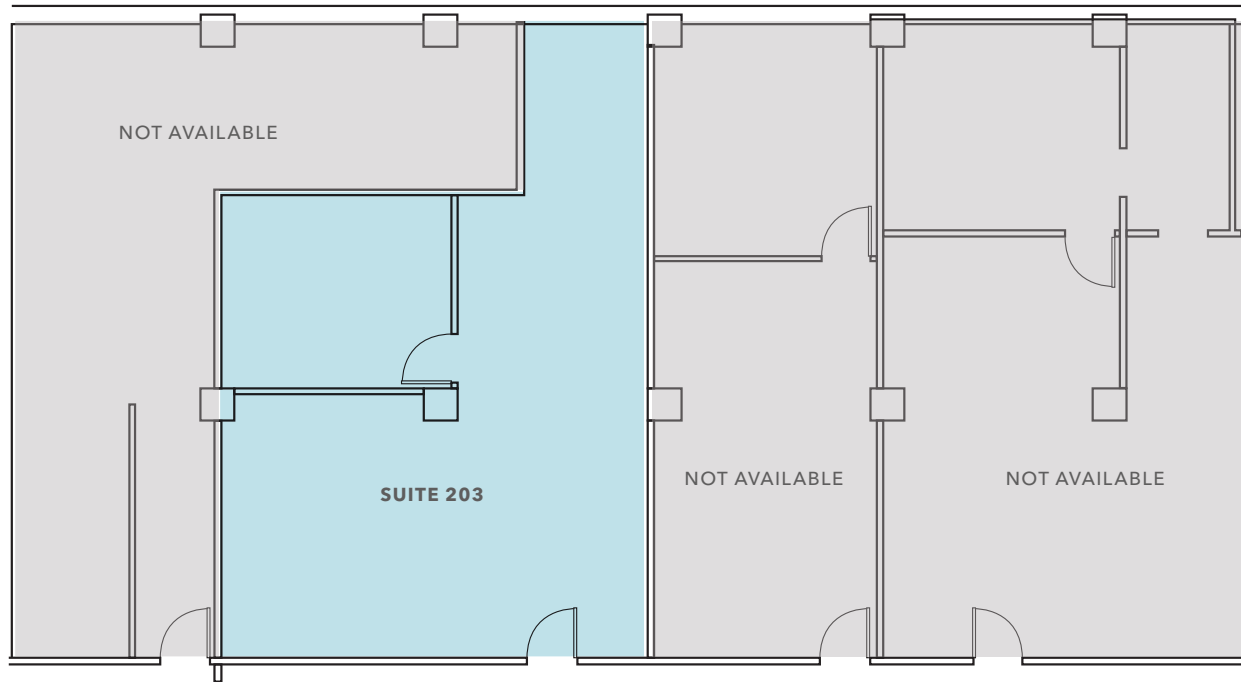
LIC N° 01750435

KIDDER.COM

This information supplied herein is from sources we deem reliable. It is provided without any representation, warranty, or guarantee, expressed or implied as to its accuracy. Prospective Buyer or Tenant should conduct an independent investigation and verification of all matters deemed to be material, including, but not limited to, statements of income and expenses. Consult your attorney, accountant, or other professional advisor. All Kidder Mathews designs are the sole property of Kidder Mathews. Branded materials and layouts are not authorized for use by any other firm or person.



SUITE 203 FLOOR PLAN



FLOOR PLAN NOT TO SCALE

→ VIRTUAL TOURS

Property Highlights

No windows

One conference room/office

Open space

No water

±1,168 RSF

AVAILABLE

\$24.00

LEASE RATE

NOW

AVAILABLE

KIDDER.COM 27MAIDENLANE.COM

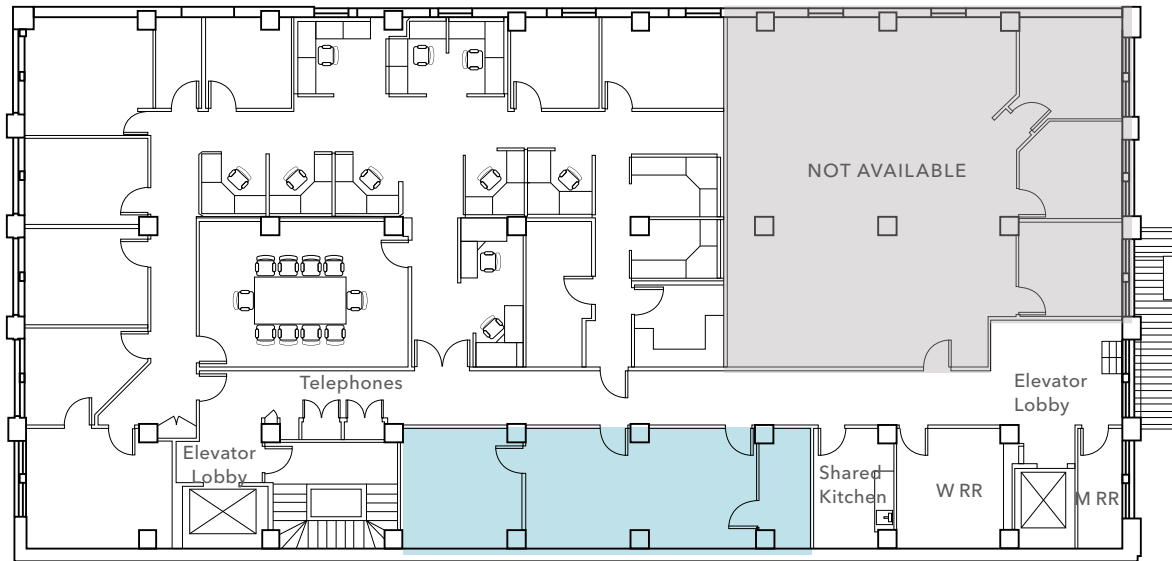
This information supplied herein is from sources we deem reliable. It is provided without any representation, warranty, or guarantee, expressed or implied as to its accuracy. Prospective Buyer or Tenant should conduct an independent investigation and verification of all matters deemed to be material, including, but not limited to, statements of income and expenses. Consult your attorney, accountant, or other professional advisor. All Kidder Mathews designs are the sole property of Kidder Mathews. Branded materials and layouts are not authorized for use by any other firm or person.



KIDDER.COM 27MAIDENLANE.COM

This information supplied herein is from sources we deem reliable. It is provided without any representation, warranty, or guarantee, expressed or implied as to its accuracy. Prospective Buyer or Tenant should conduct an independent investigation and verification of all matters deemed to be material, including, but not limited to, statements of income and expenses. Consult your attorney, accountant, or other professional advisor. All Kidder Mathews designs are the sole property of Kidder Mathews. Branded materials and layouts are not authorized for use by any other firm or person.

SUITE 625 FLOOR PLAN



FLOOR PLAN NOT TO SCALE



Property Highlights

Excellent natural light

Exposed brick walls

Three private offices

Shared kitchen

±802 RSF

AVAILABLE

\$35.00

LEASE RATE

NOW

AVAILABLE

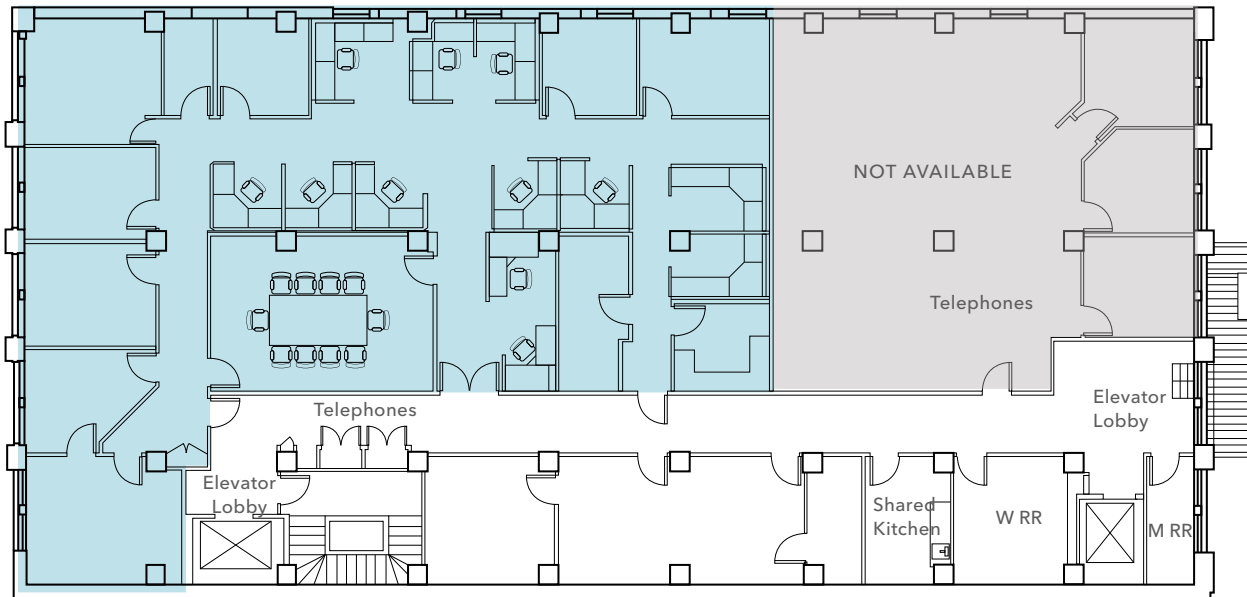
→ VIRTUAL TOURS

KIDDER.COM 27MAIDENLANE.COM

This information supplied herein is from sources we deem reliable. It is provided without any representation, warranty, or guarantee, expressed or implied as to its accuracy. Prospective Buyer or Tenant should conduct an independent investigation and verification of all matters deemed to be material, including, but not limited to, statements of income and expenses. Consult your attorney, accountant, or other professional advisor. All Kidder Mathews designs are the sole property of Kidder Mathews. Branded materials and layouts are not authorized for use by any other firm or person.



SUITE 650 FLOOR PLAN



FLOOR PLAN NOT TO SCALE

→ VIRTUAL TOURS

Property Highlights

Excellent natural light

Exposed brick walls

Eight private offices

One conference room

Shared kitchen

±4,658 RSF

AVAILABLE

\$29.00

LEASE RATE

NOW

AVAILABLE

KIDDER.COM 27MAIDENLANE.COM

This information supplied herein is from sources we deem reliable. It is provided without any representation, warranty, or guarantee, expressed or implied as to its accuracy. Prospective Buyer or Tenant should conduct an independent investigation and verification of all matters deemed to be material, including, but not limited to, statements of income and expenses. Consult your attorney, accountant, or other professional advisor. All Kidder Mathews designs are the sole property of Kidder Mathews. Branded materials and layouts are not authorized for use by any other firm or person.



